



LILY CUMMINS

THERE WAS A TIME BEFORE YOU,
THERE WILL BE A TIME AFTER YOU

2-12 August 2023



CURATORIAL+CO.

LILY CUMMINS

THERE WAS A TIME BEFORE YOU, THERE WILL BE A TIME AFTER YOU

My practice has recently been concerned with a return to painting and installation and how the two can simultaneously coexist and diverge. This body of work is an exploration of a divergence that can occur within an inner dimension and a deeper consciousness, a dream space. The results are a strange universe of dreamlike imagery and uncanny scenes.

Hiding under the saturated colour is a pervasive melancholia, indirectly speaking to themes of loss and sorrow. The works are rich in symbols and recurring motifs; archways or portals, floating spheres and an ominous net-like structure populate the paintings. Small meticulous marks mutate and coalesce like a murmuration of birds, cutting through the paint's surface and carving out space. Inhabiting some of the spaces are animals or human figures with animal traits; these hybrid creatures become guardians of the dreams and remain as sentinels after I have woken.

It is an alienated reality where fractured shapes create their own connections and tensions. Dissonant colours sit side-by-side and broad brushstrokes in the background are combined with softer more delicate drawn details in ink and oil pastel.

The felt works are an extension of the paintings, and their softness creates a tension between the hard surface of the paintings. The materiality of the felt conjures the softness of a bed, how a pillow dimples and becomes supple when a head hits it ready for sleep. The felt works are isolated visible representations of dreams pulled from the paintings—symbols hovering just near enough to be considered a part of the whole, yet far enough away that they remain enigmatic.

Lily Cummins, August 2023



A Tenuous Silence
Acrylic + oil stick on timber board
51cm x 41cm
\$925



So, go
Acrylic + oil stick on timber board
61cm x 46cm
\$985





The Deep Echoes
Acrylic, coloured pencil + oil stick on timber board
46cm x 61cm
\$985



Until the Darkness Softly Clears
Acrylic + oil stick on marine ply
61cm x 121cm
Framed in oak
\$1900





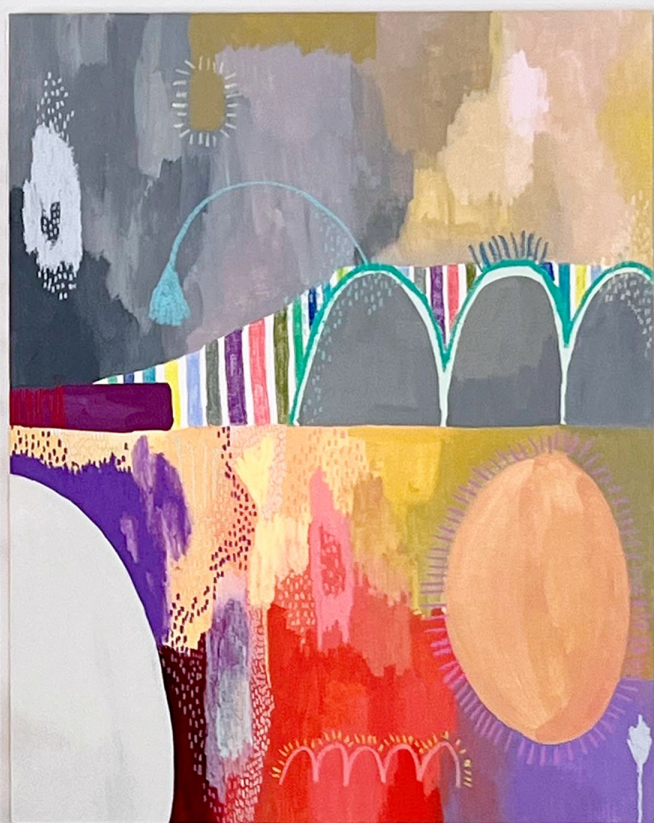
The Offering
Acrylic, coloured pencil + oil stick on timber board
41cm x 51cm
\$925



The Quickening
Acrylic + oil stick on timber board
76cm x 101cm
\$1700



The Shifting of Sleep
Acrylic + oil stick on timber board
76cm x 101cm
\$1700





Tremble
Acrylic + oil stick on timber board
31cm x 31cm
\$885



Whispering in an Empty House
Acrylic + oil stick on timber board
31cm x 31cm
\$885



CURATORIAL+CO.

ART GALLERY + ART CONSULTANCY

ENQUIRIES TO SOPHIE VANDER, DIRECTOR
curatorialandco.com | hello@curatorialandco.com

80 William St, Woolloomooloo NSW 2011

+61 2 9318 1728 | [@curatorialandco](https://www.instagram.com/curatorialandco)

Curatorial+Co. acknowledges the Traditional Custodians of the country on which the gallery stands, the Gadigal People of the Eora Nation, and recognises their continuing connection to land, waters and cultures. We pay our respects to their Elders past, present and emerging.