

SYDNEY  
CONTEMPORARY  
2022



CURATORIAL+CO.

8—11 September 2022  
Carriageworks, Sydney



MORGAN STOKES | ODETTE IRELAND | KATRINA O'BRIEN

*From a tempered sense of hope and humility in the wake of challenge our starting point of curatorial inspiration was drawn. Whether it be in the moments after a shock or sudden loss; the aftermath of natural disaster; or the strange space in which we find ourselves learning of world-changing news through our screens, this collection finds beauty in darkness and singing out into the unknown.*

KATRINA O'BRIEN



*Deepest Winter, 2022*

Ink, acrylics, oil pastel + pencil on Arches paper

130cm H x 108cm W | Framed size 148cm H x 127cm W

Float framed in black woodgrain with Perspex

\$6500



*Raise the Stakes, 2022*

Ink, acrylics, oil pastel + pencil on Arches paper  
130cm H x 216cm W | Framed size 149cm H x 235cm W  
Float framed in black woodgrain with Perspex  
\$11,500



*Seed of Myth (Proserpina)*, 2022  
Ink, acrylics, oil pastel + pencil on Arches paper  
130cm H x 324cm W | Framed Size: 133cm H x 337cm W  
\$20,000



*The Sun on Her Face (Winter's End)*, 2022  
Ink, acrylics, oil pastel + pencil on Arches paper  
130cm H x 108cm W | Framed size 148cm H x 127cm W  
Float framed in black woodgrain with Perspex  
\$6500



*Your Protector, 2022*  
Ink, acrylics, oil pastel + pencil on Arches paper  
130cm H x 108cm W | Framed size 148cm H x 127cm W  
Float framed in black woodgrain with Perspex  
\$6500





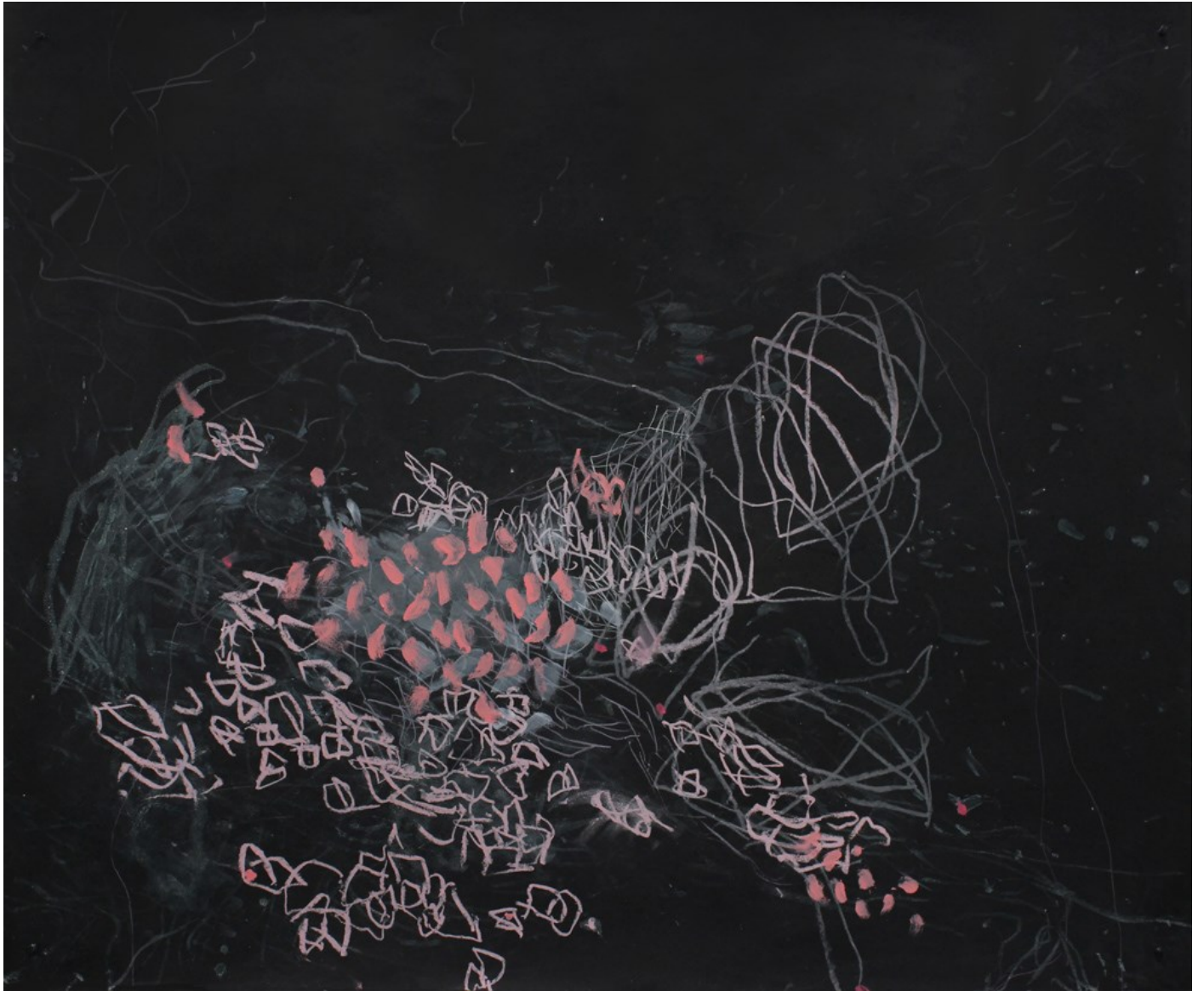
*The Call of The Forest, 2022*  
Ink, acrylics, oil pastel + pencil on Arches paper  
108cm H x 130cm W | Framed size 127cm H x 148cm W  
Float framed in black woodgrain with Perspex  
\$6500



*Wicked Game (Poppies and Pomegranates)*, 2022  
Ink, acrylics, oil pastel + pencil on Arches paper  
130cm H x 108cm W | Framed size 148cm H x 127cm W  
Float framed in black woodgrain with Perspex  
\$6500



*The Seed and the Great Fall, 2022*  
Ink, acrylics, oil pastel + pencil on Arches paper  
130cm H x 108cm W | Framed size 148cm H x 127cm W  
Float framed in black woodgrain with Perspex  
\$6500



*The Innocents and the Thief*, 2022  
Ink, acrylics, oil pastel + pencil on Arches paper  
108cm H x 130cm W | Framed size 127cm H x 148cm W  
Float framed in black woodgrain with Perspex  
\$6500

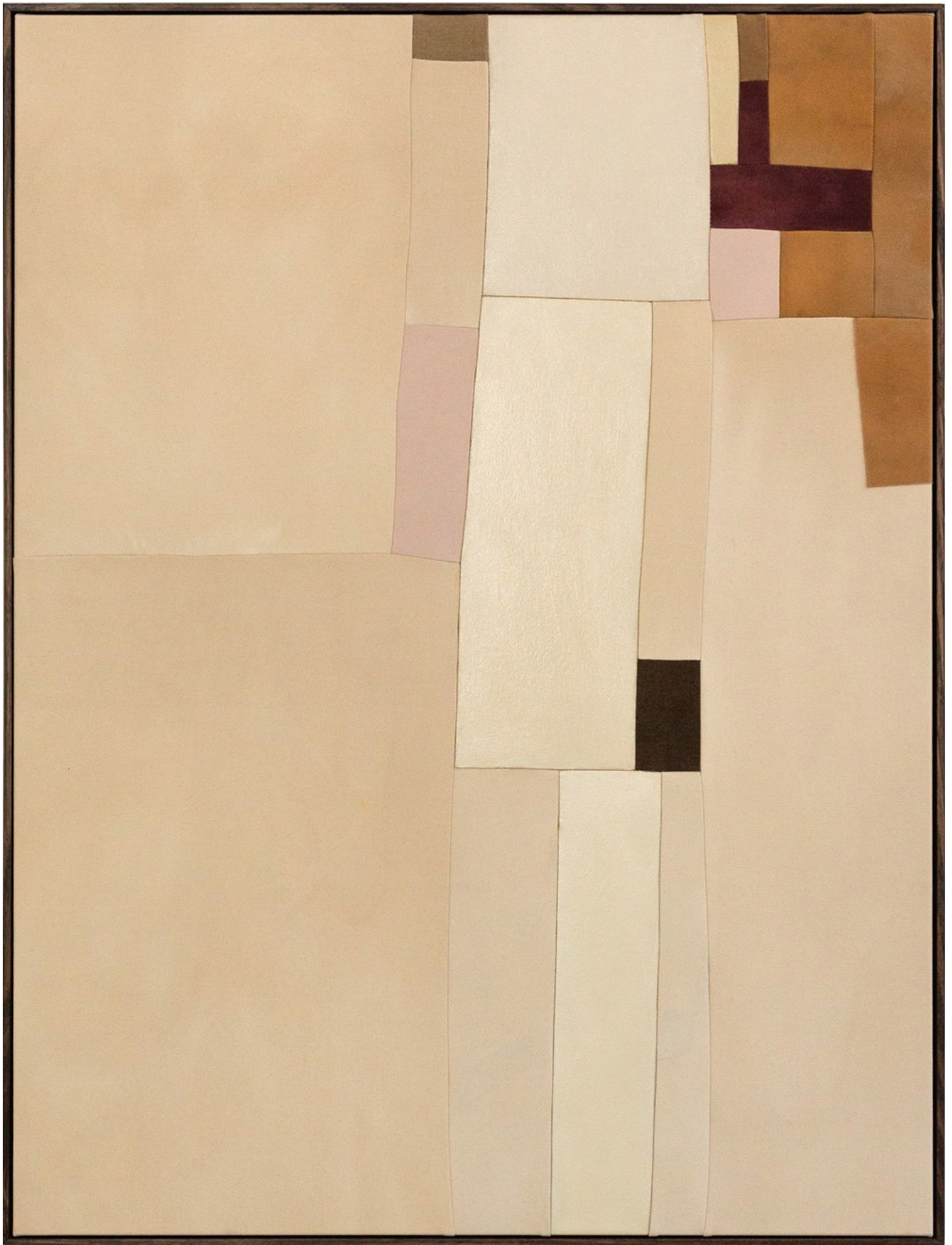
MORGAN STOKES



*On Primitivity*, 2022  
Acrylic on stitched canvas  
203cm H x 153cm W  
Framed in Tasmanian oak  
\$7200



*On Silence, 2022*  
Acrylic on stitched canvas  
153cm H x 116cm W  
Framed in Tasmanian oak  
\$5300

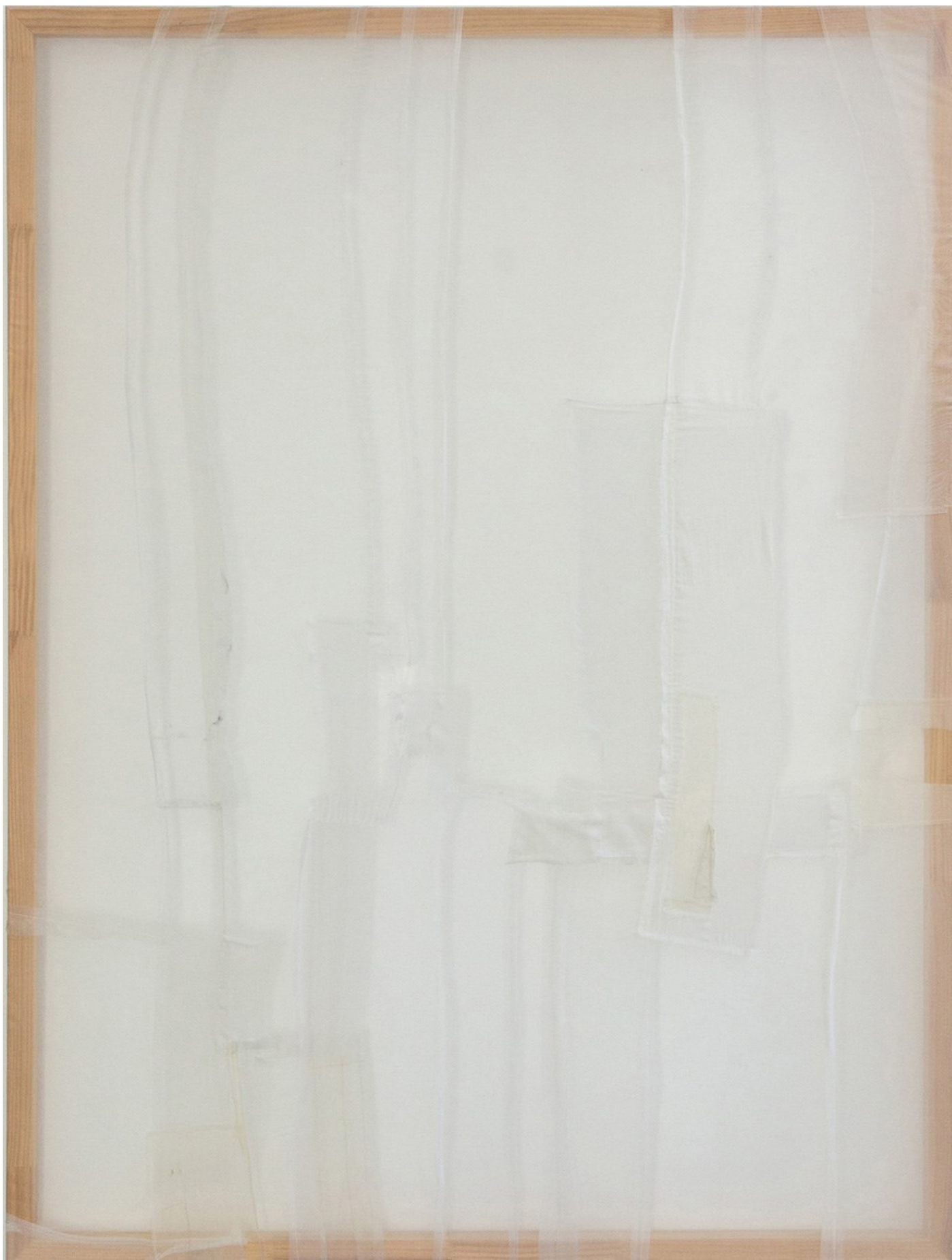


*Timid Painting, 2022*  
Acrylic on stitched canvas  
153cm H x 116cm W  
Framed in Tasmanian oak  
\$5300

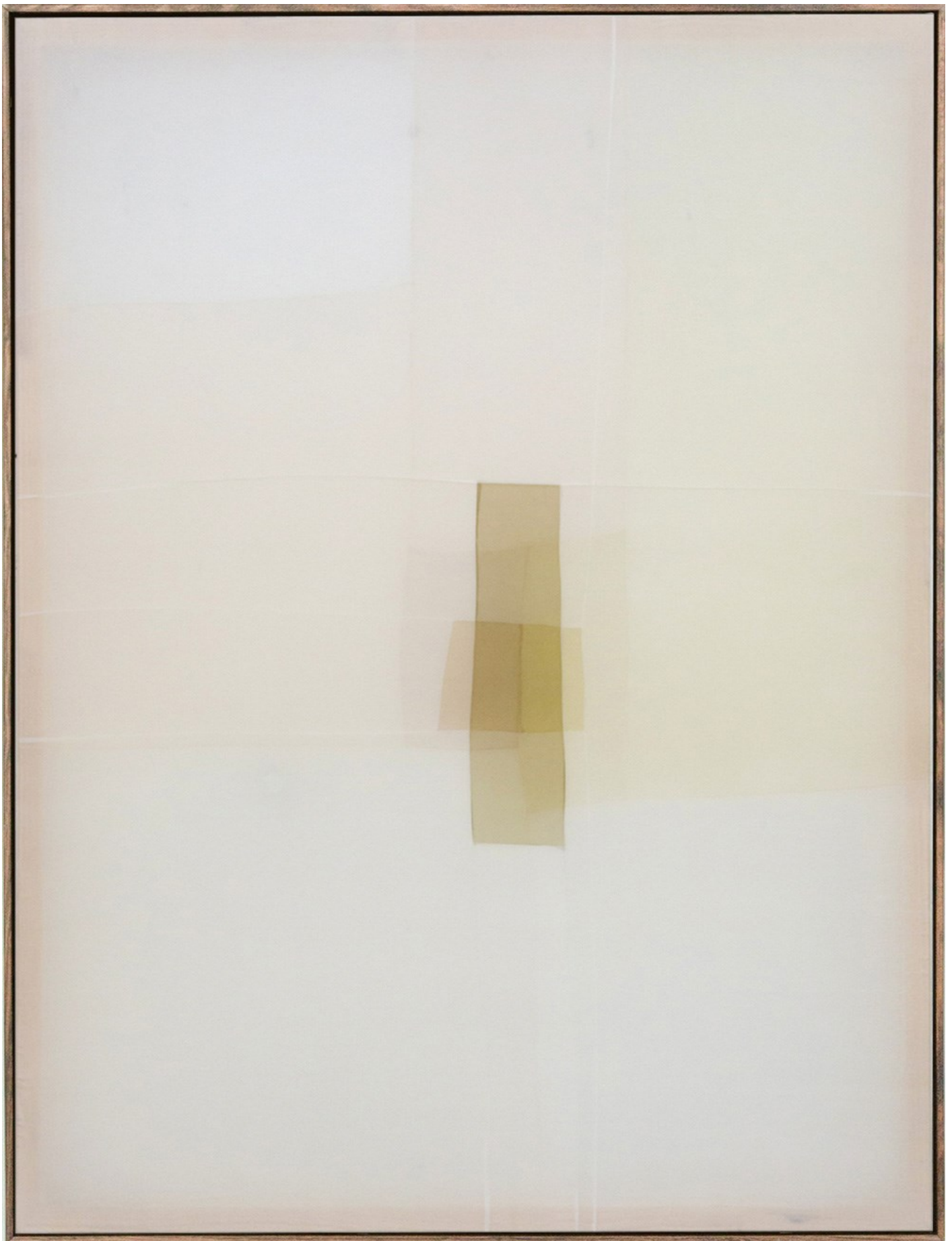




#68724E (*Off-Hex Painting 3*), 2022  
Acrylic on stitched canvas  
153cm H x 116cm W  
Framed in Tasmanian oak  
\$5300



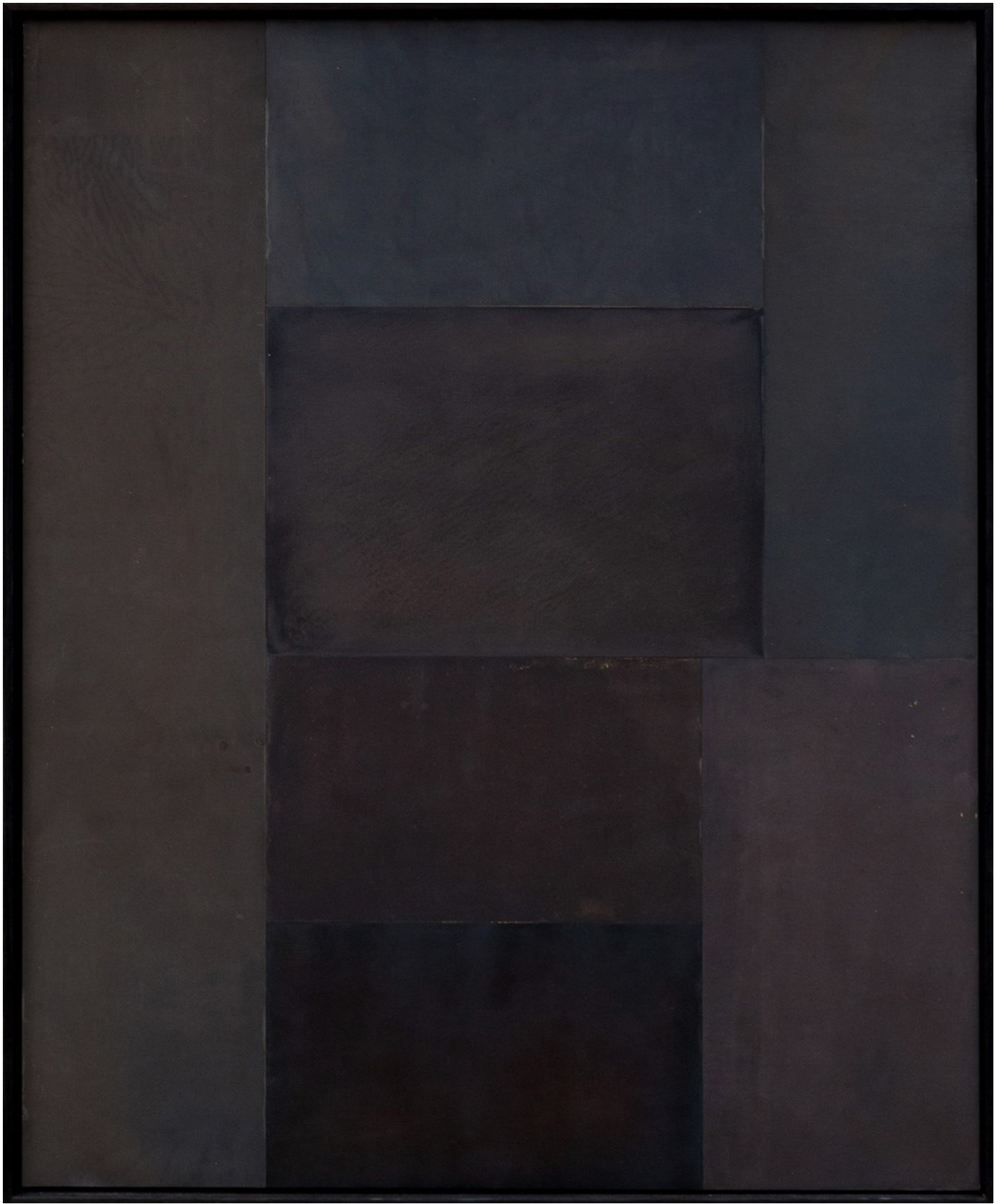
*On Existence, 2022*  
Charcoal, acrylic on stitched silk organza, polyester organza + pine  
153cm H x 116cm W  
Unframed  
\$4900



*Memory Painting, 2022*  
Dye + acrylic on stitched silk organza + polyester organza  
153cm H x 116cm W  
Framed in Tasmanian oak  
\$5300



*An Animal Origin, 2022*  
Stitched fabric + pine  
153cm H x 106cm W  
Unframed  
\$4900



*On Becoming, 2022*  
Patinated brass  
113cm H x 93cm W  
Framed in Tasmanian oak  
\$4900



*Forgetting Painting, 2022*

Dye + acrylic on stitched silk organza + pine

113cm H x 93cm W

Unframed

\$4200



*Poem From The Past, 2022*  
Stitched plastic bags + polyester organza  
113cm H x 93cm  
Framed in Tasmanian oak  
\$4200



*On The Mind, 2022*  
Pastel, silk organza, polyester organza + dichroic film  
68cm H x 51.5cm W x 5.5cm D  
Framed in Tasmanian oak  
\$1100





*Body Painting, 2022*  
Acrylic on hessian  
60cm H x 49cm W  
Framed in Tasmanian oak  
\$900



*Interior Painting 1, 2022*  
Acrylic on canvas  
58cm H x 48cm W  
Framed in Tasmanian oak  
\$900



*Seeing Painting, 2022*  
Stitched fabric  
58cm H x 48cm W  
Unframed  
\$850



*Light Painting, 2022*  
Patina on brass and copper  
58cm H x 48cm W  
Framed in Tasmanian oak  
\$1000



*Interior Painting 2, 2022*  
Acrylic on stitched canvas  
58cm H x 48cm W  
Framed in Tasmanian oak  
\$900



*Interior Painting 3, 2022*  
Acrylic on stitched canvas  
58cm H x 48cm W  
Framed in Tasmanian oak  
\$900



*Simulation Sculpture 4, 2022*  
Wiagdon granite + bronze  
47cm H x 36cm W x 30cm D  
\$9400



*Simulation Sculpture 5, 2022*  
Sofala river stone + bronze  
33cm H x 18cm W x 9cm D  
\$5700



*Simulation Sculpture 6, 2022*  
Sofala river stone + chrome plated aluminium  
19cm H x 11cm W x 9.5cm D  
\$2450

ODETTE IRELAND







*Tree Totem I, 2022*

Raku clay, chalk paint, wax, brass, copper, steel + wood

191cm H x 26cm W x 26cm D

\$4200



*Tree Totem II, 2022*

Raku clay, chalk paint, wax, brass, copper, steel + wood  
192cm H x 26cm W x 26cm D  
\$4200



*Tree Totem III, 2022*  
Raku clay, chalk paint, wax, brass, copper, steel + wood  
181cm H x 26cm W x 26cm D  
\$4200



*Tree Totem IV, 2022*  
Raku clay, chalk paint, wax, brass, copper, steel + wood  
178cm H x 26cm W x 26cm D  
\$4200



*Tree Totem V, 2022*  
Raku clay, chalk paint, wax, brass, copper, steel + wood  
177cm H x 26cm W x 26cm D  
\$4200



*Tree Totem VI, 2022*  
Raku clay, chalk paint, wax, brass, copper, steel + wood  
192cm H x 26cm W x 26cm D



*Tree Totem VII, 2022*  
Raku clay, chalk paint, wax, brass, copper, steel + wood  
170cm H x 26cm x 26cm  
\$4200



CURATORIAL+CO.

ART GALLERY + ART CONSULTANCY

ENQUIRIES TO SOPHIE VANDER, DIRECTOR  
[curatorialandco.com](http://curatorialandco.com) | [hello@curatorialandco.com](mailto:hello@curatorialandco.com)  
Studio 1, 175 Cleveland St Redfern NSW 2016  
+61 2 9318 1728 | [@curatorialandco](https://www.instagram.com/curatorialandco)



Sydney  
Contemporary  
08 — 11.09.2022  
Carriageworks

---

Principal Partner



MA Financial Group

Curatorial+Co. acknowledges the Traditional Custodians of the country on which the gallery stands, the Gadigal People of the Eora Nation, and recognises their continuing connection to land, waters and cultures.  
We pay our respects to their Elders past, present and emerging.