



THE LIMINAL SPACE

AMANDA SCHUNKER

KATARINA WELLS

3-13 August 2022



CURATORIAL+CO.

The Space in Between—breaths
The Space in Between—noise
The Space in Between—chaos

In creating this body of work, *The Space in Between* evolved in response to the insurmountable unrest happening across the world in recent years.

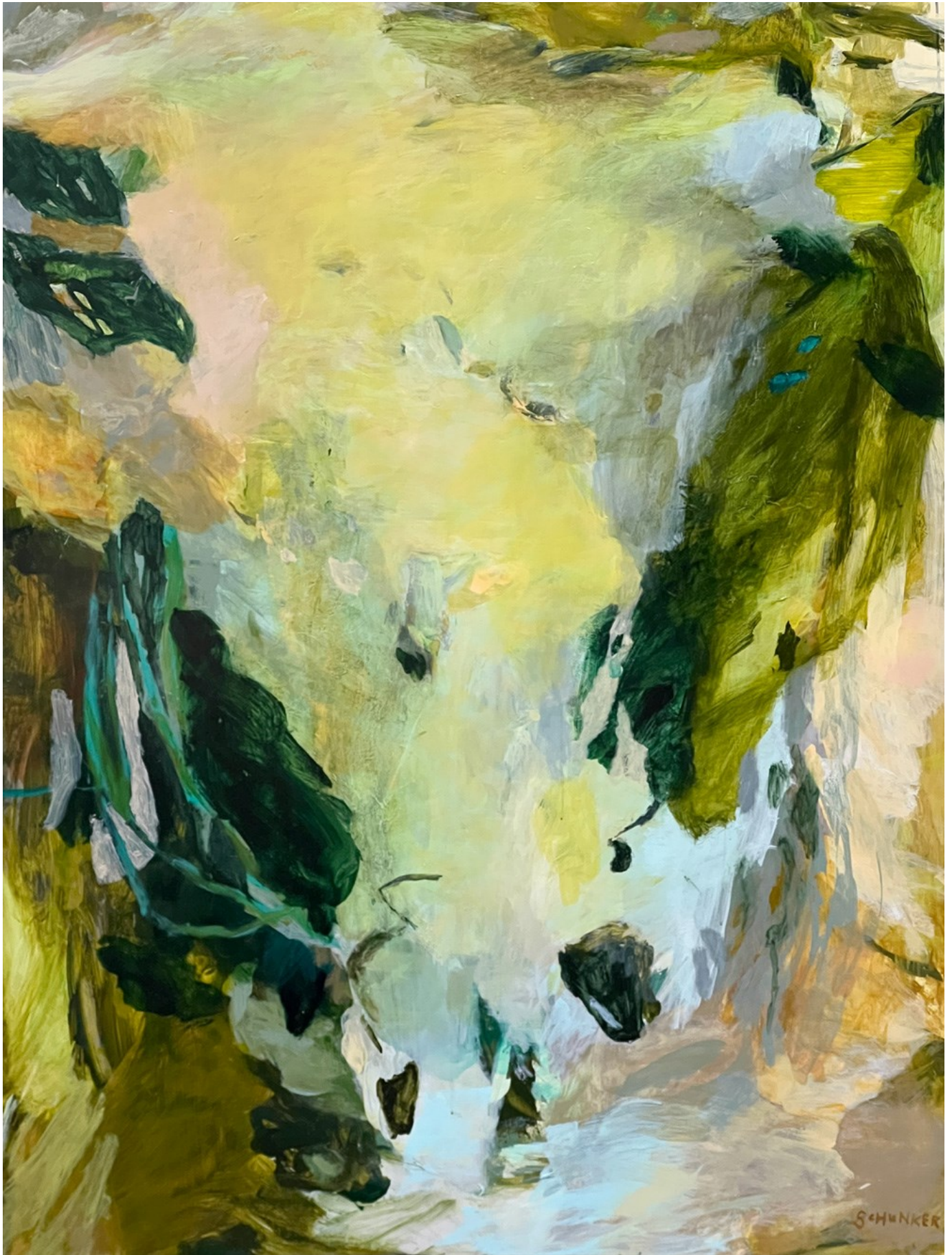
How do we harness ourselves when we are perpetually flung into mercurial circumstances at a whim?
How do we find pause?

At first we are drawn to the noise, the joy, the celebration of a rich palette. Our optimistic ideals beg to come to fruition. I paint, paint with vigor the fond connection of the land and the sea that I recall so vividly. The places that have provided solace to me. The places I have traipsed, traced my hands and lodged to memory.

Then I sit, sit with them, allowing them to mature. I begin to turn down the volume, scrape back, edit, mute. Gradually the layered veils of silence reveal themselves to me, for it is here that I find pause. Looking into the negative spaces, the subtle undercurrent, there is a necessary *Space in Between* that guides me home.

A pathway out of the chaos.

Amanda Schunker



AMANDA SCHUNKER
Hidden Ravine
Acrylic on board | 160cm x 120cm
\$5800



AMANDA SCHUNKER

Chasm

Acrylic on board | 160cm x 120cm

Unframed

\$5800



AMANDA SCHUNKER
Shifting Tides
Acrylic on board | 122cm x 82cm
Framed in raw Tasmanian oak
\$4900



AMANDA SCHUNKER

Koi

Acrylic on board | 122cm x 82cm

Framed in raw Tasmanian oak

\$4900



AMANDA SCHUNKER
Tidal Discord
Acrylic on board | 160cm x 120cm
Unframed
\$5800



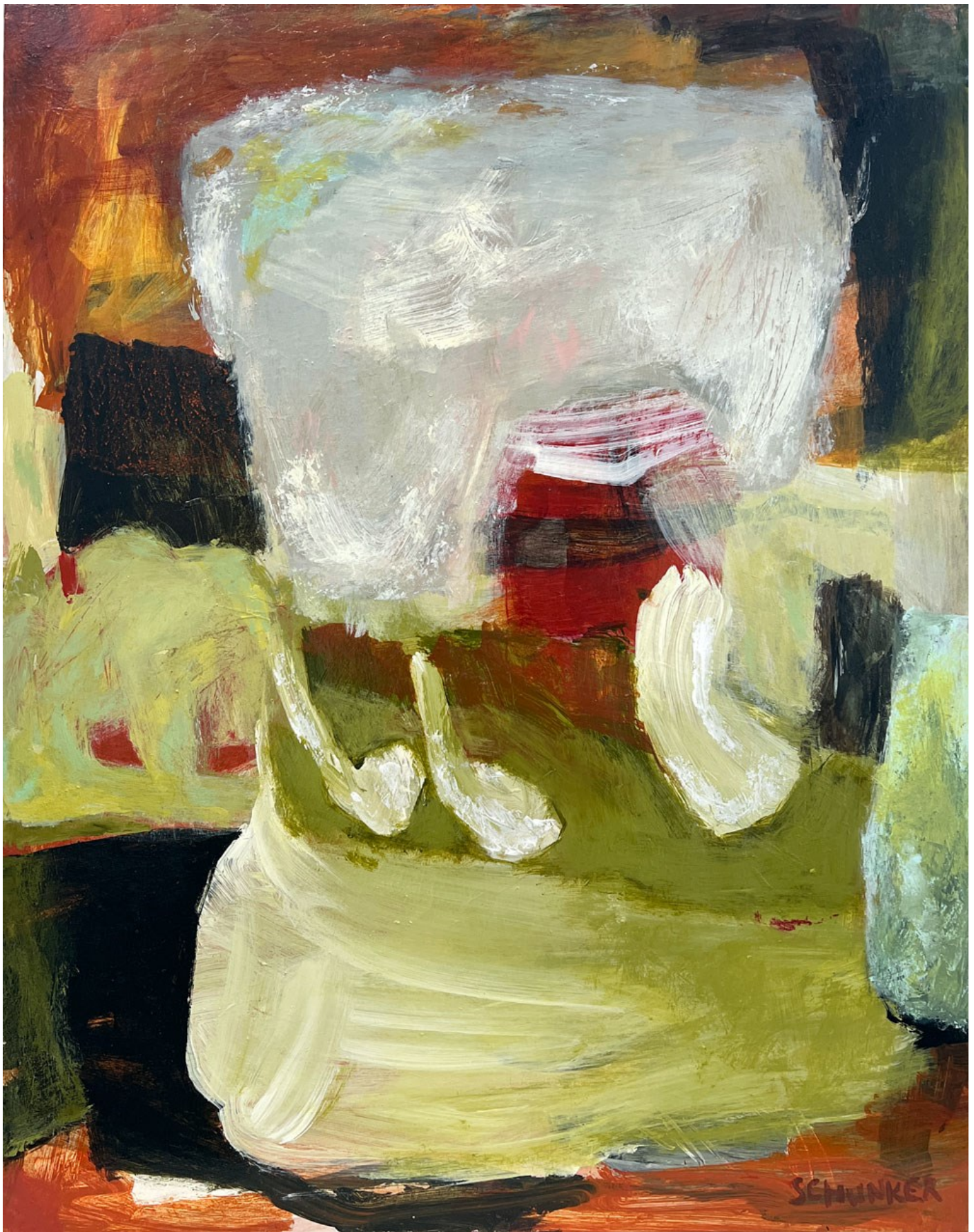
AMANDA SCHUNKER

Chinks

Acrylic on board | 82cm x 62cm

Framed in raw Tasmanian oak

\$3500



AMANDA SCHUNKER
Tessellated Paths
Acrylic on board | 82cm x 62cm
Framed in raw Tasmanian oak
\$3500



Sea I



Sea II



AMANDA SCHUNKER
Land II
Acrylic, pastel + collage on paper | 53cm x 43cm
Framed in raw Tasmanian oak with glass
\$950



City III



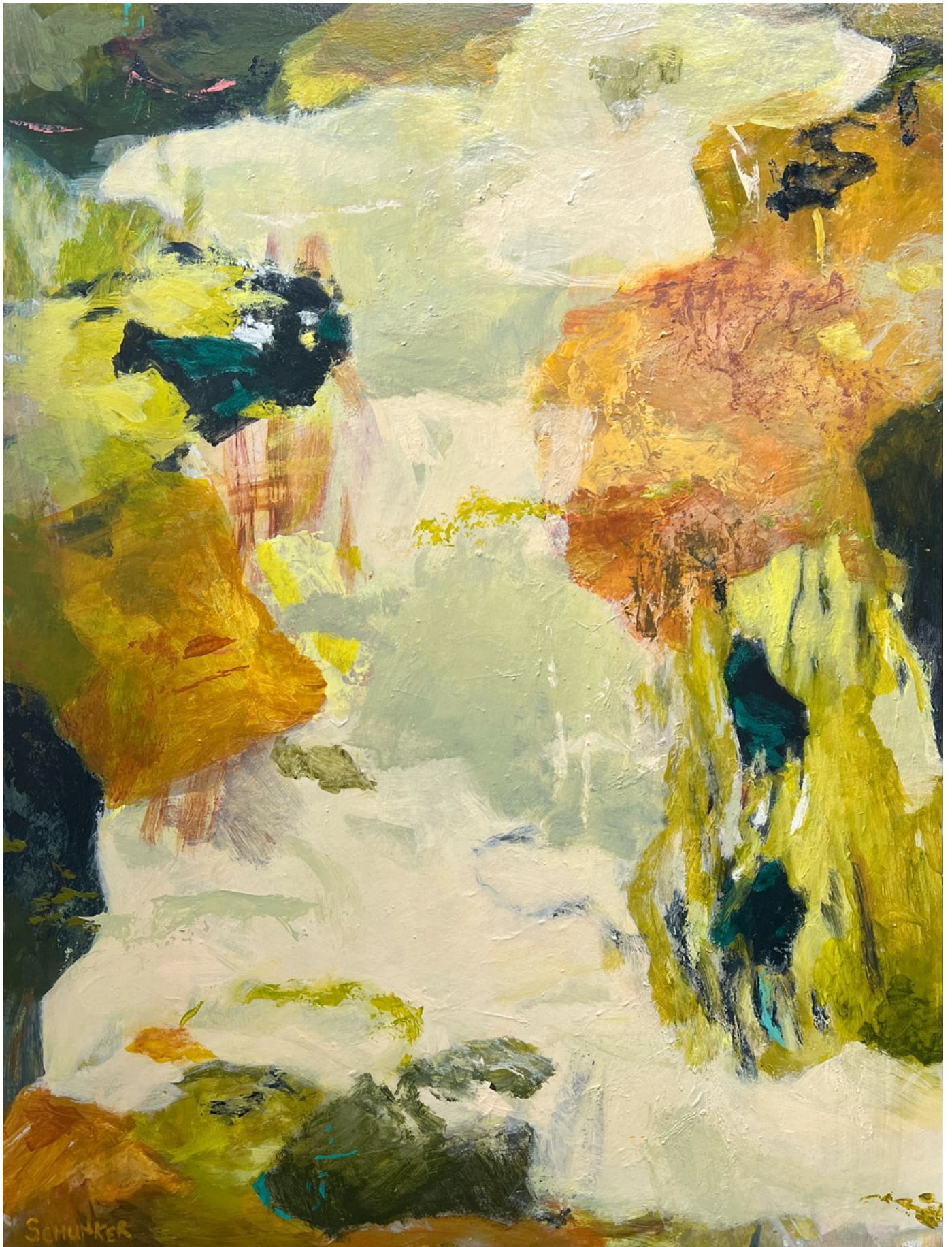
AMANDA SCHUNKER

Schist

Acrylic on board | 82cm x 62cm

Framed in raw Tasmanian oak

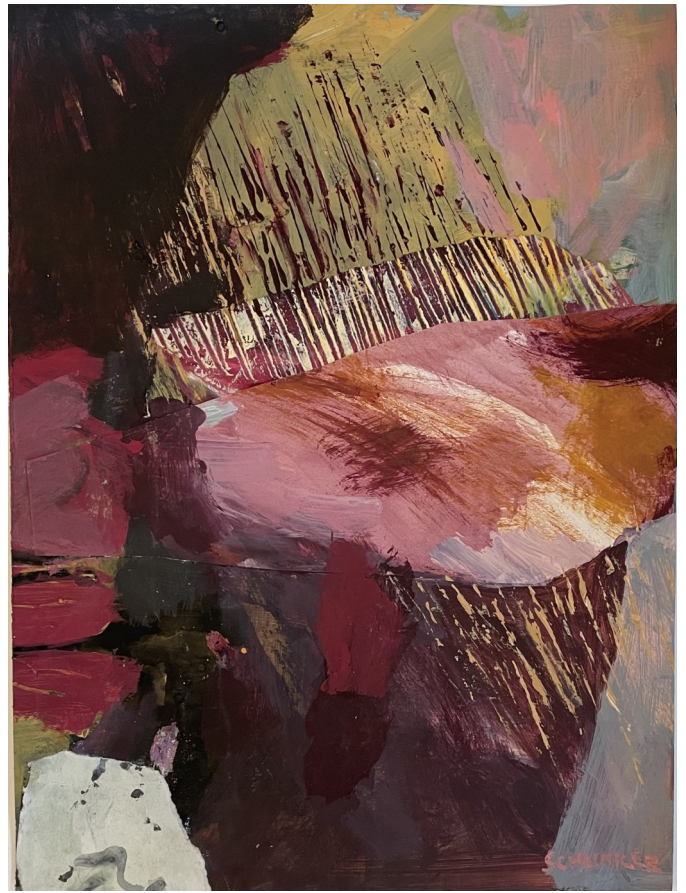
\$3500



AMANDA SCHUNKER
Pristine Tarn
Acrylic on board | 82cm x 62cm
Framed in raw Tasmanian oak
\$3500



City I



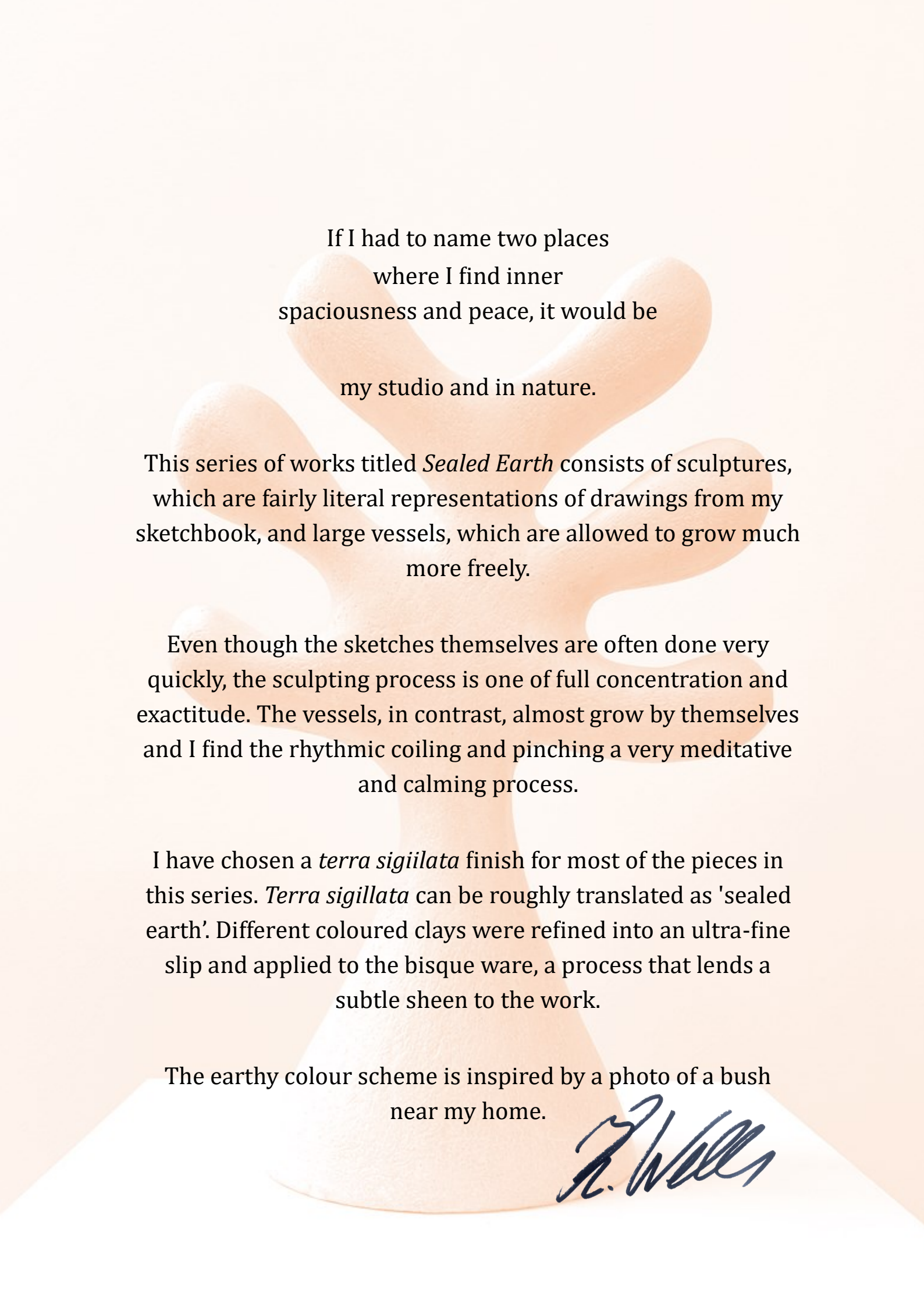
City II



AMANDA SCHUNKER
Sea III
Acrylic, pastel + collage on paper | 53cm x 43cm
Framed in raw Tasmanian oak with glass
\$950



Land I



If I had to name two places
where I find inner
spaciousness and peace, it would be

my studio and in nature.

This series of works titled *Sealed Earth* consists of sculptures,
which are fairly literal representations of drawings from my
sketchbook, and large vessels, which are allowed to grow much
more freely.

Even though the sketches themselves are often done very
quickly, the sculpting process is one of full concentration and
exactitude. The vessels, in contrast, almost grow by themselves
and I find the rhythmic coiling and pinching a very meditative
and calming process.

I have chosen a *terra sigillata* finish for most of the pieces in
this series. *Terra sigillata* can be roughly translated as 'sealed
earth'. Different coloured clays were refined into an ultra-fine
slip and applied to the bisque ware, a process that lends a
subtle sheen to the work.

The earthy colour scheme is inspired by a photo of a bush
near my home.





KATARINA WELLS

Sketch I

Earthenware + oxides

43 x 15 x 15cm + 42 x 16 x 15cm

\$1450



KATARINA WELLS
Sketch II
Earthenware + terra sigillata
53 x 29 x 29cm
\$1850



KATARINA WELLS
Sketch III
Earthenware + terra sigillata
47 x 33 x 21cm
\$1400



KATARINA WELLS
Sketch V
Earthenware + terra sigillata
45 x 30 x 21cm
\$1500



KATARINA WELLS
Sketch VI
Earthenware + oxides
51 x 33 x 17cm
\$1600



KATARINA WELLS
Sketch IV
Earthenware + terra sigillata
48 x 35 x 20cm
\$1500



KATARINA WELLS

Sketch IX

Earthenware, terra sigillata + shellac

57 x 44 x 27cm

\$2200



KATARINA WELLS
Sketch X
Earthenware + acrylic paint
45 x 26 x 12
\$1600



KATARINA WELLS
Sketch VII
Earthenware + terra sigillata
55 x 35 x 25cm
\$1800



KATARINA WELLS
Sketch VIII
Earthenware + terra sigillata
54 x 33 x 20cm
\$1800



KATARINA WELLS
Spacious in Burnt Orange
Earthenware + terra sigillata
50 x 51 x 51cm
\$2000



KATARINA WELLS
Spacious in Hibiscus
Earthenware + terra sigillata
48 x 47.5 x 48cm
\$2200



KATARINA WELLS
Spacious in Charcoal
Earthenware + oxides
55 x 54 x 55cm
\$2200



KATARINA WELLS
Spacious in Blush
Earthenware + terra sigillata
47 x 60 x 63cm
\$2000



KATARINA WELLS
Spacious in Bone
Earthenware + terra sigillata
45 x 55 x 54cm
\$2000



CURATORIAL+CO.

ONLINE ART GALLERY + ART CONSULTANCY

ENQUIRIES TO SOPHIE VANDER, DIRECTOR
curatorialandco.com | hello@curatorialandco.com
Studio 1, 175 Cleveland St Redfern NSW 2016
+61 2 9318 1728 | [@curatorialandco](https://www.instagram.com/curatorialandco)

Curatorial+Co. acknowledges the Traditional Custodians of the country on which the gallery stands, the Gadigal People of the Eora Nation, and recognises their continuing connection to land, waters and cultures. We pay our respects to their Elders past, present and emerging.